

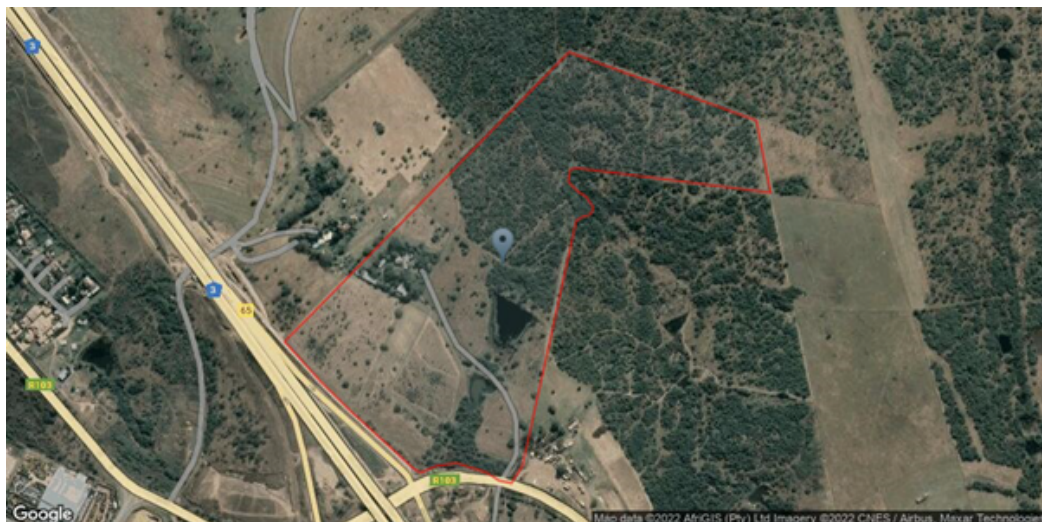


Lisa Andrew
081 270 2765
lisaandrew@acutts.co.za

Contact Acutts Hilton

031 2660555

Shop 5
6 Village Road
Kloof



Web Ref RLA2326



R28,500,000

🛏 4 🛁 2.5 🚗 4

Monthly Bond Repayment R294,173.69

Calculated over 20 years at 11% with no deposit.

Transfer Costs R3,377,371.00 **Bond Costs** R132,285.00

These calculations are only a guide. Please ask your conveyancer for exact calculations.

On the Ridge Development Opportunity

Prime property at Lynnfield Park interchange, massive area of opportunity adjacent to the N3. The value of this property and potential to re zone for commercial development is massive. With vital commercial development happening along this N3 corridor, this beats all hands down. If you are serious about property development, then this investment is unparalleled. The future is ripe with possibility for a visionary developer to recognise the potential here.

For more information or to schedule an appointment to view, contact Acutts professional and registered property practioners.

Features

Pets Allowed Yes

Interior

Bedrooms	4
Bathrooms	2.5
Kitchens	1
Recep. Rooms	3
Studies	1
Furnished	No

Exterior

Garages	4
Carports / Parkings	3
Security	Yes
Dom. Accom.	1
Pool	Yes
Views	True

Sizes

Land Size	28Ha
-----------	------