

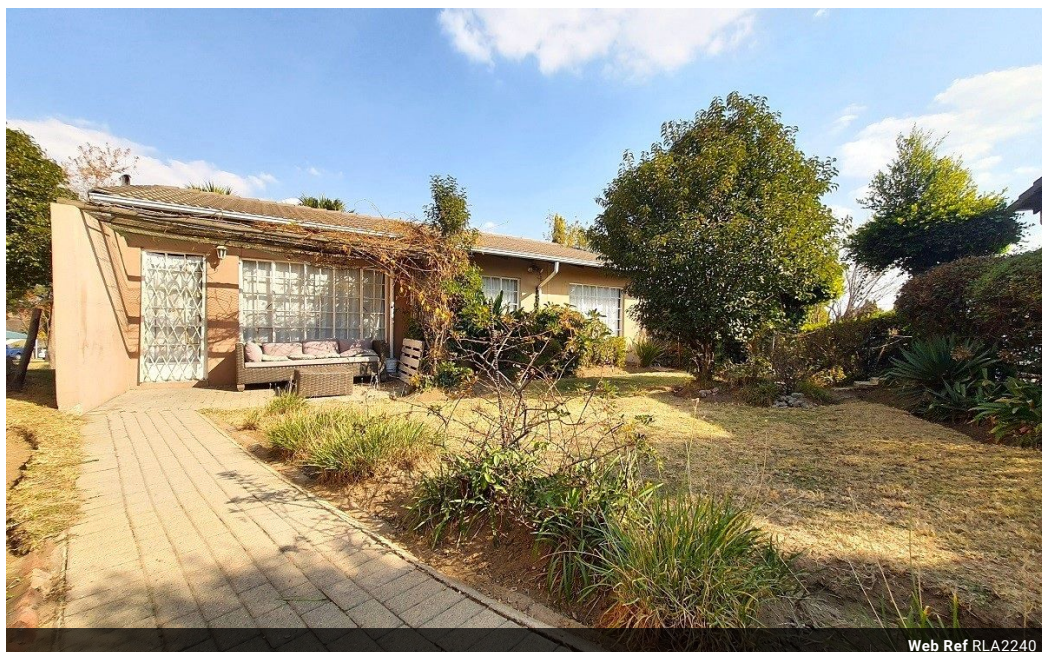


**Alexander Tshakalisa**  
083 300 8199  
alexandert@acutts.co.za

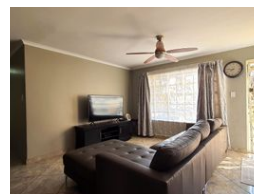
Contact Acutts Midrand

081 3135675

234 Seventh Road  
Halfway Gardens  
Midrand



Web Ref RLA2240



### R999,000

**Monthly Bond Repayment** R10,311.56  
Calculated over 20 years at 11% with no deposit.

**Transfer Costs** R30,412.00    **Bond Costs** R23,335.00

These calculations are only a guide. Please ask your conveyancer for exact calculations.

**Monthly Rates** R850    **Sectional Title Levy** R3,201

2    2    1

Beautiful & homely 2 bedroom 2 bathroom 1 garage free standing simplex unit in a secure complex

Situated in a secure complex, Santa Cruz, in Country View, Midrand, this beautiful, upgraded, comfortable, lock-up & go simplex unit features big private hedged front & rear gardens, 2 generous tiled bedrooms, 2 beautiful bathrooms (1 en-suite), spacious tiled open plan lounge with a fan, separate dining area with a built-in cupboard, large modern open plan kitchen with lots of cupboard space, corner pantry cupboard, granite tops & a breakfast counter, open patio under a pergola, security gates on both exit doors, burglar-proofed windows, 1 lock-up garage & generous open parking space. The unit was recently upgraded with new & enlarged kitchen cupboards, granite counter tops, plastered ceilings, and all carpets were replaced with tiles. This unit has the same floor area as the 3 bed units. The difference is that it has dining...

### Features

#### Interior

Bedrooms 2  
Bathrooms 2  
Kitchens 1  
Recep. Rooms 2  
Furnished No

#### Exterior

Garages 1  
Carports / Parkings 3  
Security Yes  
Pool Yes  
Views False

#### Sizes

Floor Size 97m<sup>2</sup>  
Land Size 250m<sup>2</sup>

#### Extras

24 Hour Access Burglar Bars Communal Braai Area En Suite Fan Freestanding Garden Granite Tops Guard House Satellite Dish Open Plan Kitchen Security Complex Security Gate Tiled Floors Visitors Parking North Washing Machine Connection Pantry

