

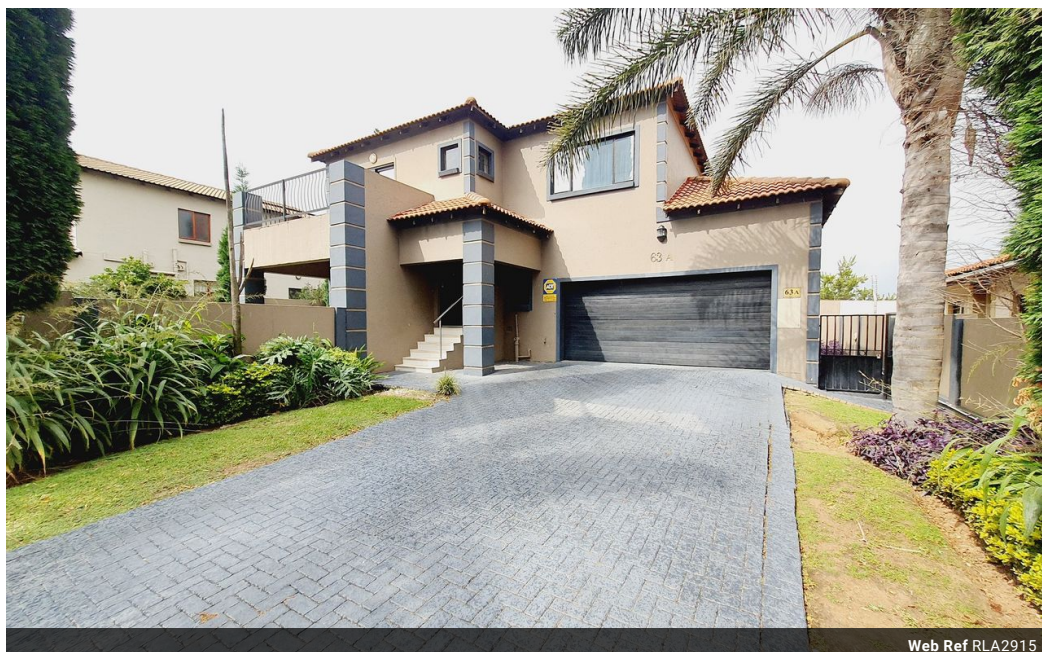


Alexander Tshakalisa
083 300 8199
alexandert@acutts.co.za

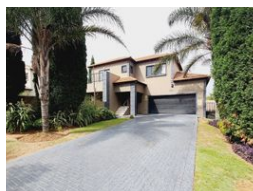
Contact Acutts Midrand

081 3135675

234 Seventh Road
Halfway Gardens
Midrand



Web Ref RLA2915



R2,200,000

3 2.5 2

Monthly Bond Repayment R22,708.14
Calculated over 20 years at 11% with no deposit.

Transfer Costs R89,947.00 **Bond Costs** R34,625.00

These calculations are only a guide. Please ask your conveyancer for exact calculations.

Monthly Levy R970 **Monthly Rates** R1,025

Beautiful free-standing 3 bedroom 2.5 bathroom double storey cluster house with a double garage

Situated in a secure residential estate, Country View Gardens Estate, a gem hiding in plain sight next to the Pretoria - Johannesburg boundary. This comfortable free standing double storey cluster house comprises 174 sqm of floor area on 500 sqm of fully walled garden space.

The property invites you from the street with a long, wide driveway finished with grey painted paving blocks. The ground floor features a entrance porch, elevated entrance hall with steps down into a generous tiled lounge leading to a spacious covered patio, a dining room open plan with a beautiful kitchen with ample beautiful glossy cupboards, island prep station, eye level oven, black granite tops, wide ceran hob & microwave box, a guest toilet leading from a passage between the entrance hall & garage, a double garage with an interconnecting door to a...

Features

Pets Allowed Yes

Interior

Bedrooms	3
Bathrooms	2.5
Kitchens	1
Recep. Rooms	2
Furnished	No

Exterior

Garages	2
Carports / Parkings	4
Security	Yes
Pool	No
Views	True

Sizes

Floor Size	174m ²
Land Size	500m ²

Extras

24 Hour Access Above Road Alarm System Burglar Bars Security Gate Security Estate Balcony Driveway Covered Patio Double Storey En Suite Entrance Hall Freestanding Granite Tops Centre Island Guard Guard House Guest Toilet Laminated Floors Near Bus Service Near Mini Bus Service Outdoor Beams Sliding Doors Totally Walled Sprinkler System

