



Alexander Tshakalisa
083 300 8199
alexandert@acutts.co.za

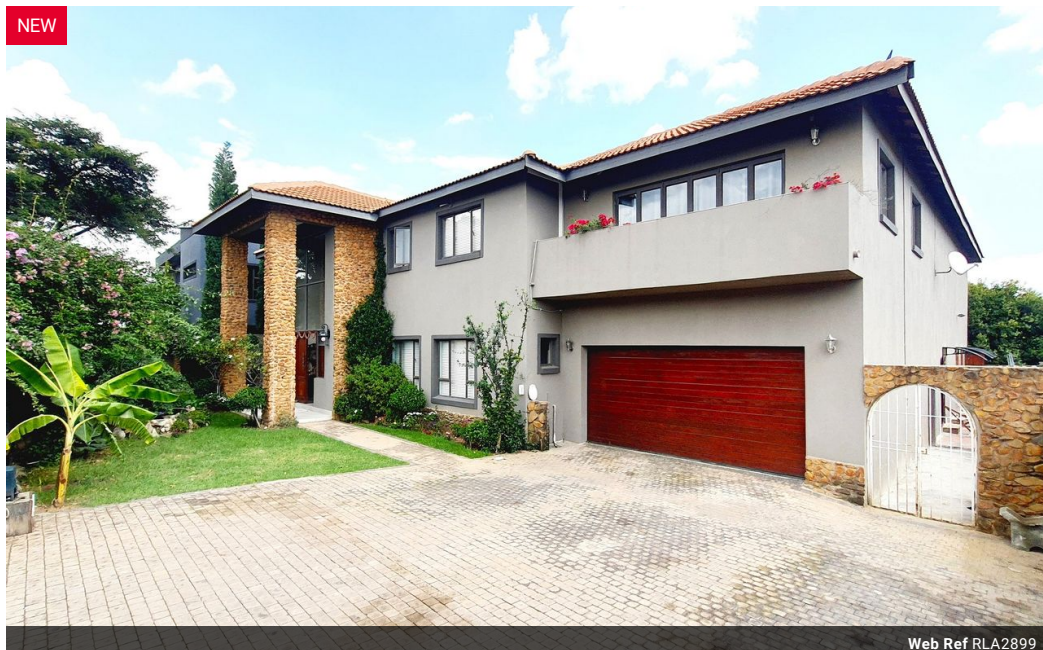


Rhonah Tshakalisa
083 294 8188
midrand@acutts.co.za

Contact Acutts Midrand

081 3135675

234 Seventh Road
Halfway Gardens
Midrand



Web Ref RLA2899



R7,600,000

Monthly Bond Repayment R78,446.32
Calculated over 20 years at 11% with no deposit.

Transfer Costs R705,228.00 **Bond Costs** R75,285.00
These calculations are only a guide. Please ask your conveyancer for exact calculations.

6 6.5 2

Monthly Levy R2,427 **Monthly Rates** R3,201

Exquisite 6 bedroom 6,5 bathroom luxury family residence in a secure lifestyle estate

This is a rare opportunity to acquire an architect designed, expertly constructed, exquisitely finished & well maintained very large executive family residence in one of Midrand's prime lifestyle estates. Large volumes of beautiful & inviting spaces stretch in all directions, flowing & connecting effortlessly to create an inspiring ambient & emotional experience. Expert & meticulous craftsmanship is evident on every nook, every panel, every joint & every corner.

The property comprises a double storey residence with a total floor space of 677 square metres plus a large swimming pool, neatly placed on a 1007 square metre double stand on a cul de sac. The property is fully walled with a natural stone street façade & an ornamental electric gate. The house foundations are stone clad. The house comprises three wings linked on one...

Features

Pets Allowed Yes

Interior		Exterior		Sizes	
Bedrooms	6	Garages	2	Floor Size	677m ²
Bathrooms	6.5	Carports / Parkings	4	Land Size	1,007m ²
Kitchens	1	Security	Yes		
Recep. Rooms	4	Dom. Accom.	2		
Studies	2	Pool	Yes		
Furnished	No	Views	False		

Extras

24 Hour Access 24 Hour Response Alarm System Electric Garage Electric Gate Security Estate Air Conditioning Unit Blinds Balcony Built In Braai Covered Patio Cul_De_Sac Double Storey En Suite Entrance Hall Fireplace Eye Level Oven Garden Freestanding Gas Hob Intercom Granite Tops Laminated Floors Guest Toilet Guard Guard House Communal Braai Area Immaculate Condition Pantry Storeroom Tuscan Staff Quarters Domestic Rooms Laundry Courtyard Outdoor Beams Tennis Court Totally Walled Special Lights Water Feature Aluminium Window

