



Lisa Andrew
081 270 2765
lisaandrew@acutts.co.za

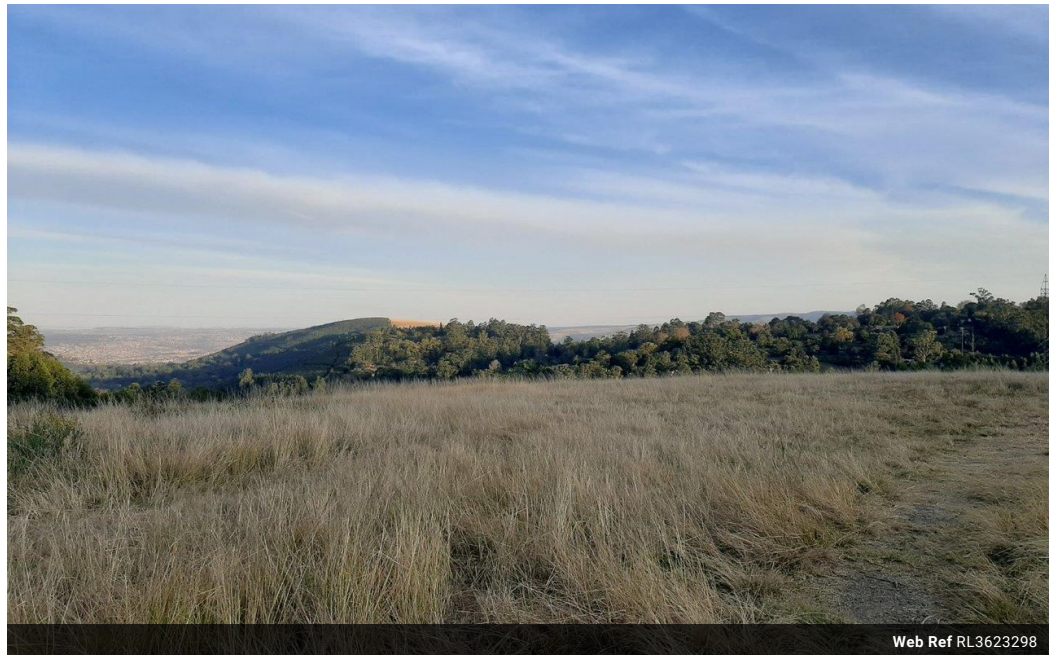


Evan van der Meijden
081 284 9768
evanvdm@acutts.co.za

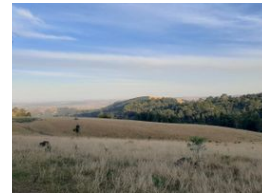
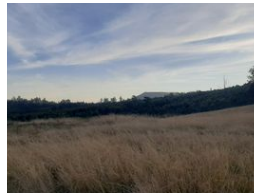
Contact Acutts Hilton

031 2660555

Shop 5
6 Village Road
Kloof



Web Ref RL3623298



R3,950,000

Monthly Bond Repayment R40,771.44
Calculated over 20 years at 11% with no deposit.

Transfer Costs R275,550.00 **Bond Costs** R51,610.00
These calculations are only a guide. Please ask your conveyancer for exact calculations.

Calling developers - prime land

This land, zoned agricultural and 82 hectares in extent with timber, is situated between Pietermaritzburg and Hilton above the greenbelt of the charming Winterskloof valley. The adjacent land of 45 hectares is also for sale separately for R3.95m. The two properties (127 hectares in total) comprise approximately 18 hectares of mistbelt grassland and 14 hectares of indigenous forest. The land boasts picturesque views toward Pietermaritzburg, natural indigenous forests and plant species that fall within the Winterskloof catchment area that is known for its little streams that meander down gentle hills to 'Maritburg'.

If you are looking to develop a commercial office park/ shopping complex and housing estate, then look no further. This is perfectly positioned and a unique area of opportunity here in the heart of mountain biking...

Features

