

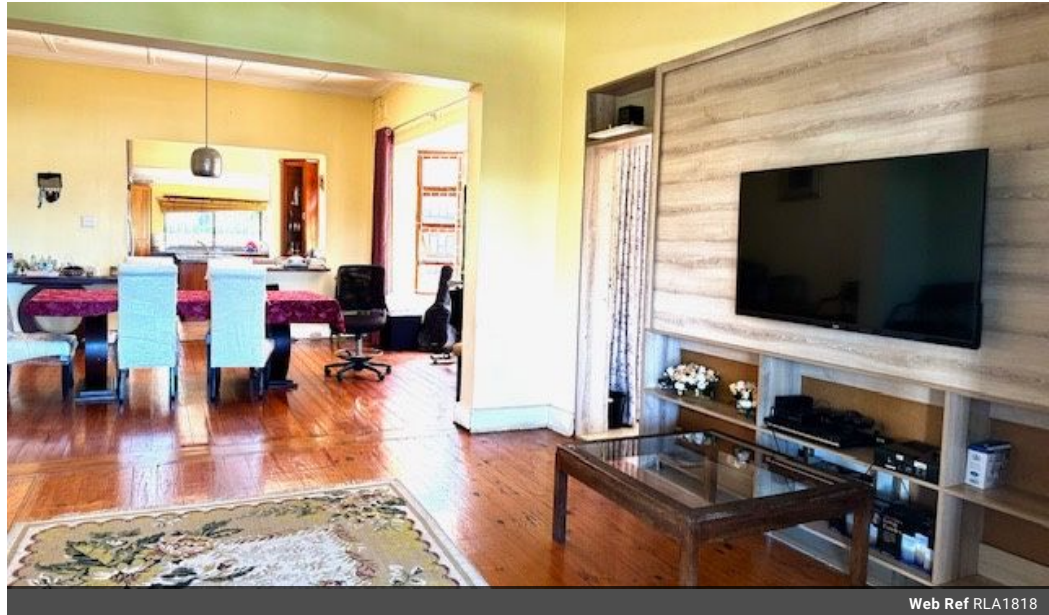


Shane Manikam
083 963 6303
shanemanikam@acutts.co.za

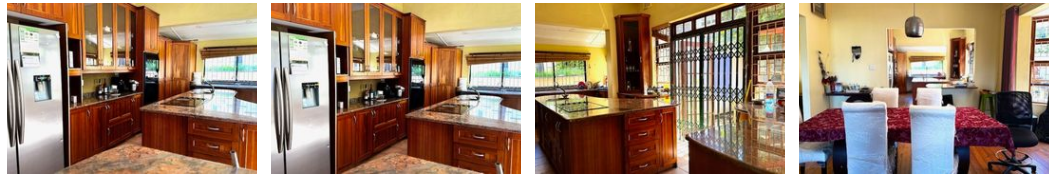
Contact Acutts Morningside

031 2660555

376 Peter Mokaba Ridge,
Overport,
Durban



Web Ref RLA1818



R3,995,000

4 3 3

Monthly Bond Repayment R41,235.93
Calculated over 20 years at 11% with no deposit.

Transfer Costs R280,500.00 **Bond Costs** R51,610.00
These calculations are only a guide. Please ask your conveyancer for exact calculations.

Monthly Rates R2,500

Large family residence nestled in the heart of Essenvood!

Introducing an expansive residence nestled on a substantial parcel of GR2 developmental land in the vibrant heart of Essenvood. This capacious family dwelling not only provides a comfortable haven but also holds the potential for the construction of six units on the spacious grounds.

Upon entering, you'll be welcomed by an open-plan dining area that seamlessly flows into a generously sized lounge, complemented by an enclosed balcony offering serene views of the lush garden. The well-appointed kitchen boasts granite countertops, an under-counter oven, and an extractor fan. A central island with a preparation sink, a breakfast nook, and a scullery with solid wood built-in cupboards and a double-basin sink enhance the culinary experience.

The interior of the house reveals four generously proportioned bedrooms, with three...

Features

Pets Allowed	Yes				
Interior		Exterior		Sizes	
Bedrooms	4	Garages	3	Land Size	934m ²
Bathrooms	3	Security	No		
Kitchens	1	Dom. Accom.	1		
Recep. Rooms	2	Pool	Yes		
Studies	1	Views	True		
Furnished	No				