

Shavir Singh
078 894 3383
shavirsingh@acutts.co.za

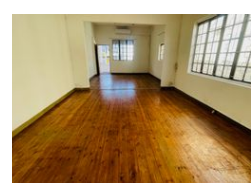
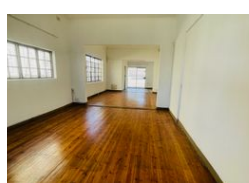
Contact Acutts Morningside

031 2660555

376 Peter Mokaba Ridge,
Overport,
Durban



Web Ref CLA145



R2,400,000

Monthly Rates R4,360 Excl. VAT

0 10

Investment Opportunity in Prime Location, GR2 Zoning in Windermere

This free-standing commercial property in the heart of Windermere, boasting sought-after GR2 zoning. The property is currently divided into two separate sections, one side is currently generating rental income whilst the other side is vacant.

Its prime location on Mathew Meyiwa Road (Stamford hill) provides excellent visibility and accessibility, which is crucial for businesses seeking exposure to high traffic areas. Additionally, being close to major arterial routes, public transport, schools, and shopping amenities enhances its appeal to potential tenants or buyers.

Don't forget the outbuilding which adds versatility to the property, whether for additional storage, a small office space, or another

Features

Zoning Commercial

Exterior
Open Parking Bays 10

Sizes
Floor Size 200m²
Land Size 605m²

Extras
Air Conditioning Unit Burglar Bars Carport Garden Secure Parking